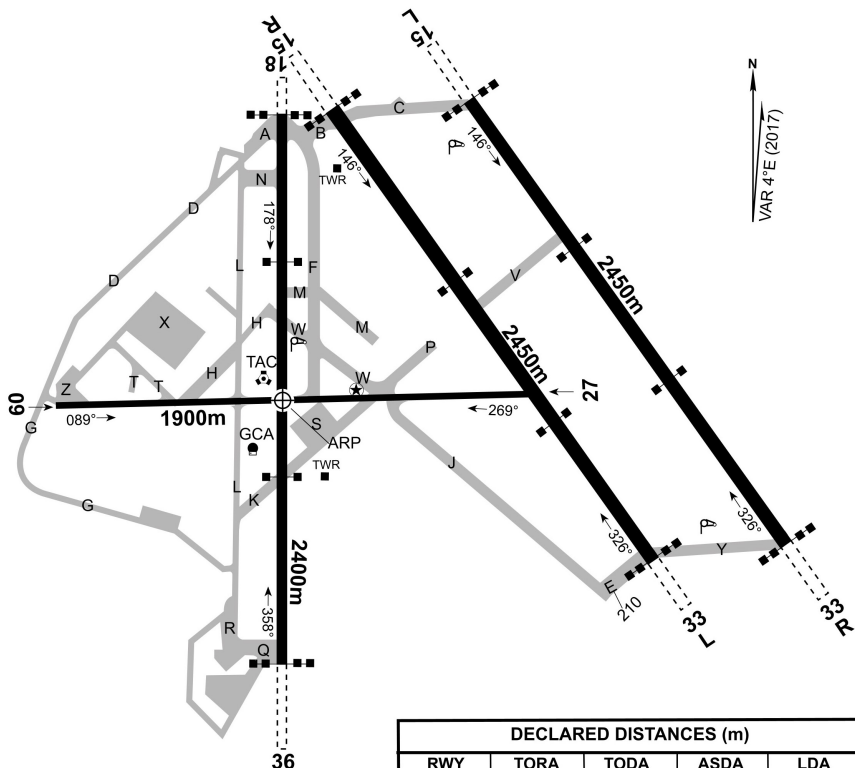
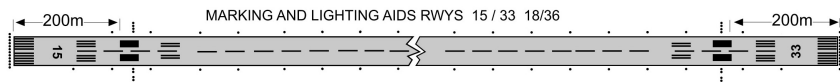


ATIS 1584	Ground 129	Tower 128.15 6333	AD Elev 196'	AD REFERENCE POINT (ARP) N 31° 50.2' E 34° 49.1'
---------------------	----------------------	---------------------------------	------------------------	---



DECLARED DISTANCES (m)				
RWY	TORA	TODA	ASDA	LDA
15R	2450	2450	2450	2450
33L	2450	2450	2450	2450
15L	2450	2450	2450	2450
33R	2450	2450	2450	2450
18	2400	2400	2400	2400
36	2400	2400	2400	2400



ADDITIONAL RWY INFORMATION

RWY	DIRECTION	DISPLACED THR COORDINATES	ELEV	LENGTH	WIDTH	REMARKS
15R	146°	N 31° 50.831' E 34° 49.244'	166'	2450m	50m	-
33L	326°	N 31° 49.700' E 34° 49.987'	201'			
15L	146°	N 31° 50.855' E 34° 49.591'	167'	2450m	50m	-
33R	326°	N 31° 49.723' E 34° 50.335'	219'			
18	178°	N 31° 50.815' E 34° 49.108'	170'	2400m	45m	Instrument RWY, SALS, PAPI 2.5°
36	358°	N 31° 49.516' E 34° 49.036'	183'			
09	089°	N 31° 50.127' E 34° 49.612'	157'	1900m	15m	Avail in emergency landing
27	269°	N 31° 50.216' E 34° 49.734'	181'			




ATIS
1584

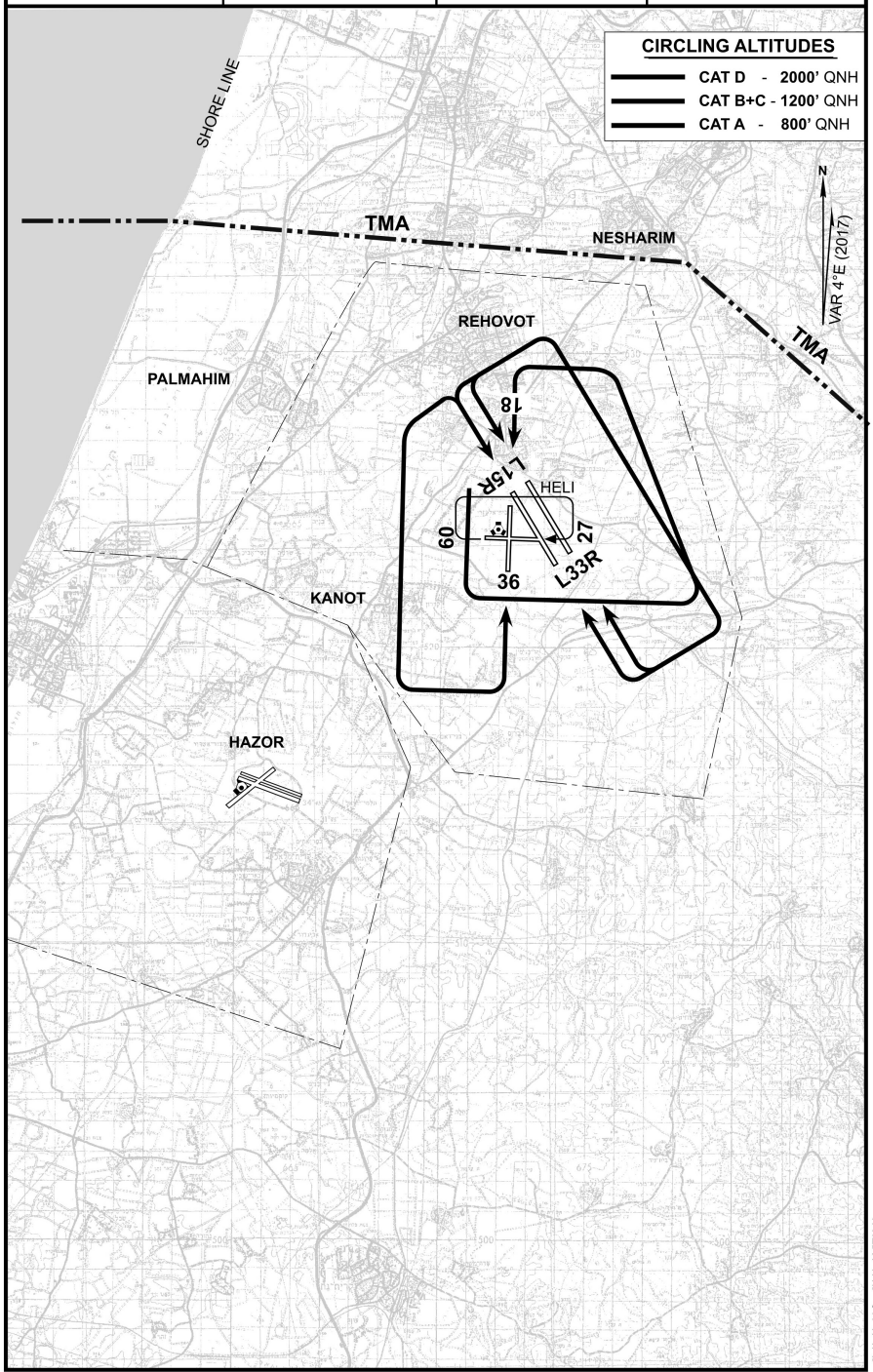
Tower
128.15 6333

Ground
129

AD Elev
196'

CIRCLING ALTITUDES

-  CAT D - 2000' QNH
-  CAT B+C - 1200' QNH
-  CAT A - 800' QNH



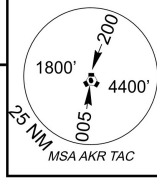
ATIS
1584

Ground
129

Tower
**128.15
6333**

B.GURION APP
120.5

AD Elev
196'



GENERAL INSTRUCTIONS

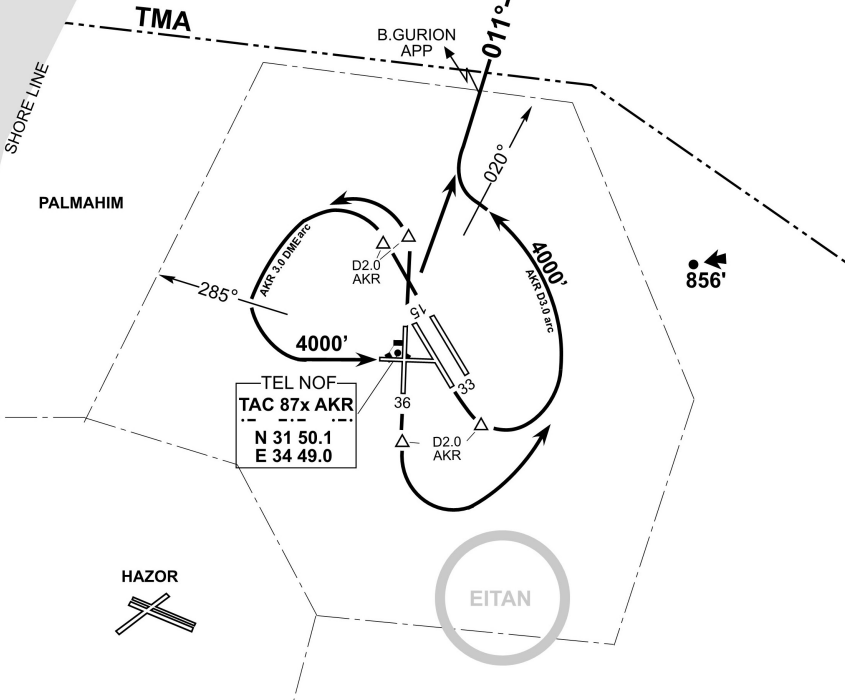
1. This SID is designated to depart via AKR
3.0 DME arc climbing to **4000'**.
2. Require prior permission from BEN-GURION TWR
3. Minimum climb gradient of 300'
per NM (5%) up to **4000'**.

GND speed - KT	90	120	150	180	210	240
MNM ROC - FPM	460	610	760	915	1065	1220

RWYs 15,18,33,36 DEPARTURES

SPEED: MAX 250 KT

B. GURION
VOR ϕ 113.5 BGN
N 32 00.8
E 34 52.5



INITIAL CLIMB

Climb straight ahead, at AKR 2.0 DME turn **LEFT** along AKR 3.0 DME arc climb to **4000'**.

RWYs	ROUTING
15,18	Crossing AKR R-020° turn RIGHT intercept AKR R-011° 4000' . proceed to BGN VOR at 6000' or as directed.
33,36	Crossing AKR R-285° turn LEFT to reach TAC then turn LEFT intercept AKR R-011° proceed to BGN VOR at 6000' or as directed.

תעודת טיסה - 517

LLEK
TEL - NOF

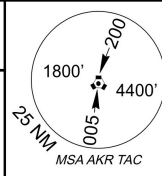
TRANSPORT

10 OCTOBER 18

בלמ"ס

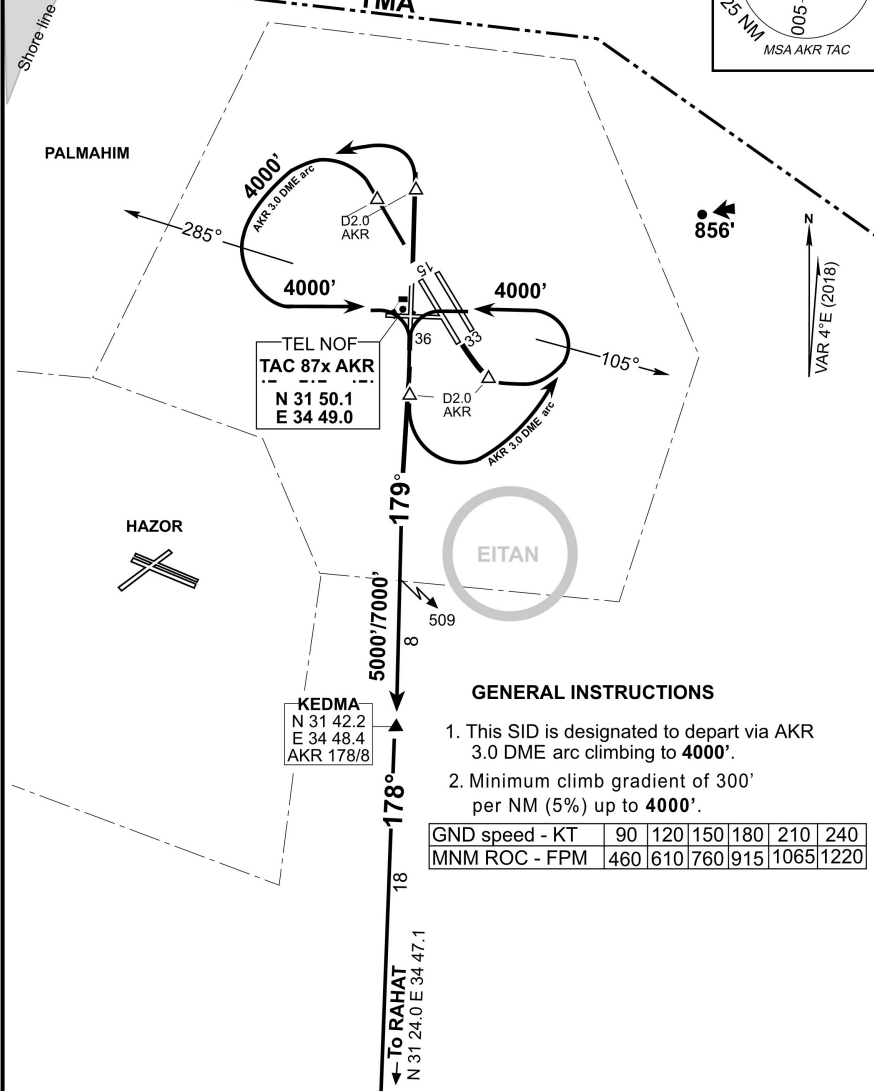
TEL - NOF, ISRAEL
SID KEDMA

ATIS 1584	Ground 129	Tower 128.15 6333	509 128.25 6305	AD Elev 196'
--------------	---------------	-------------------------	-----------------------	-----------------



RWYs 15,18,33,36 DEPARTURES

TMA



GENERAL INSTRUCTIONS

1. This SID is designated to depart via AKR 3.0 DME arc climbing to **4000'**.
2. Minimum climb gradient of 300' per NM (5%) up to **4000'**.

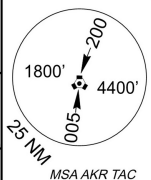
GND speed - KT	90	120	150	180	210	240
MNM ROC - FPM	460	610	760	915	1065	1220

INITIAL CLIMB

Climb straight ahead, at AKR 2.0 DME turn **LEFT** along AKR 3.0 DME arc climb to **4000'**.

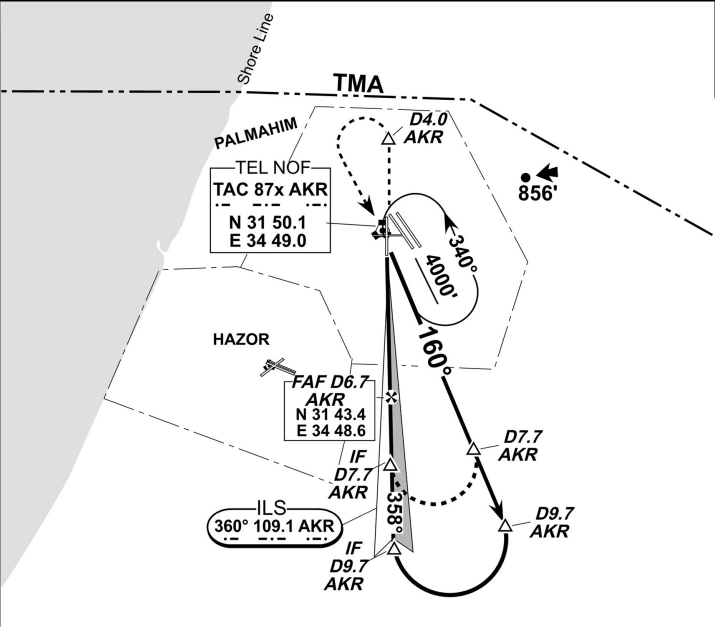
RWYs	ROUTING
15,18	Crossing AKR R-105° turn LEFT to reach TAC then intercept AKR R-178° climbing to 5000'/7000' or as directed.
33,36	Crossing AKR R-285° turn LEFT to reach TAC then turn RIGHT intercept AKR R-178°, climb to 5000'/7000' or as directed

ATIS 1584		509 138.7		Approach 168		Tower 128.15 6333	
LOC AKR 109.1	Final APCH CRS 358°	FAF D6.7 AKR 1900'	ILS DA(H) 490'(307')	AD Elev 196'	TAC 87XAKR		

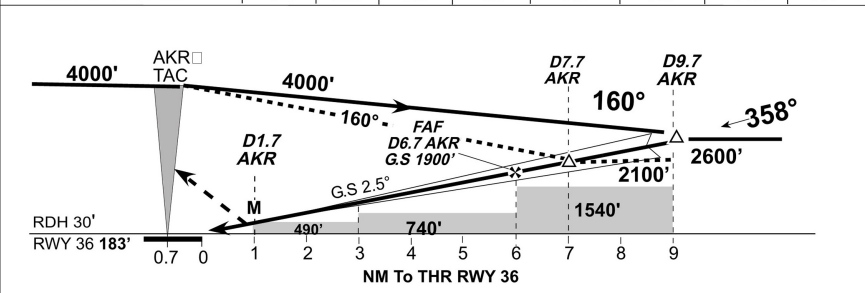


MISSED APCH: Climb straight ahead, turn **LEFT** not later than AKR 4.0 DME to reach **TAC** at **4000'** or as directed.

TDZE RWY 36
N 31° 49.624'
E 34° 49.043'
Elev. 183'



LOC	AKR DME	2.0	3.0	4.0	5.0	6.0	7.0	8.0	9.7
G.S OUT	ALT (H)	560' (377')	820' (637')	1090' (907')	1350' (1167')	1620' (1437')	1900' (1717')	2200' (2017')	2600' (2417')
NM to RWY 36		1.3	2.3	3.3	4.3	5.3	6.3	7.3	9.0



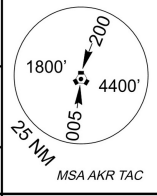
GND speed - KTS	90	120	150	180	210	240	D4.0 ↑ 4000' LT HLD at 4000'
Rate of descent - FPM	400	535	665	800	930	1065	

Straight - in RWY 36			MAX KTS 165	Circle to land	
ILS 36 DA (H) 490'(307') VIS 1800m	LOC 36 (G.S OUT) DA (H) 790'(607') ALS OUT VIS 3900m	MDA (H)		1000'(804') VIS 3200m	

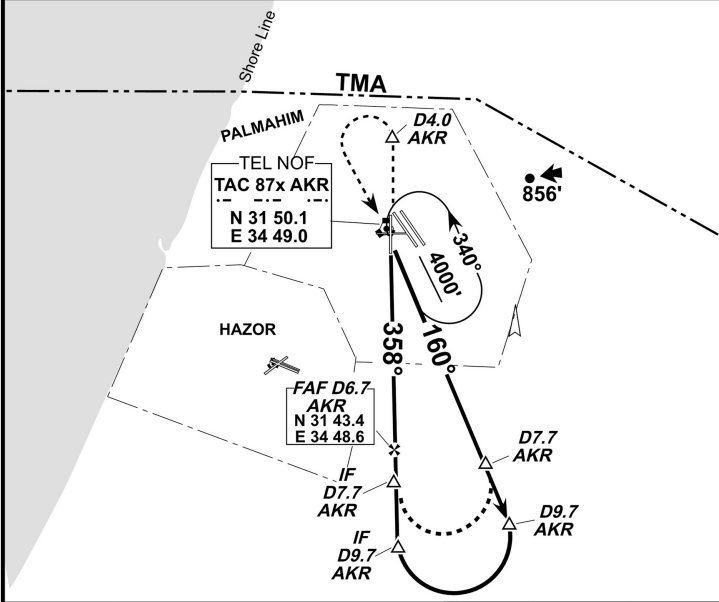
יחידה 517 - תחנת תל נוף

ATIS 1584	509 138.7	Approach 168	Tower 128.15 6333
---------------------	---------------------	------------------------	-----------------------------

LOC AKR 109.1	Final APCH CRS 358°	FAF D6.7 AKR 1900'	TAC DA(H) 790'(607')	AD Elev 196'	TAC 87XAKR
----------------------------	----------------------------------	---------------------------------	-----------------------------------	------------------------	---------------

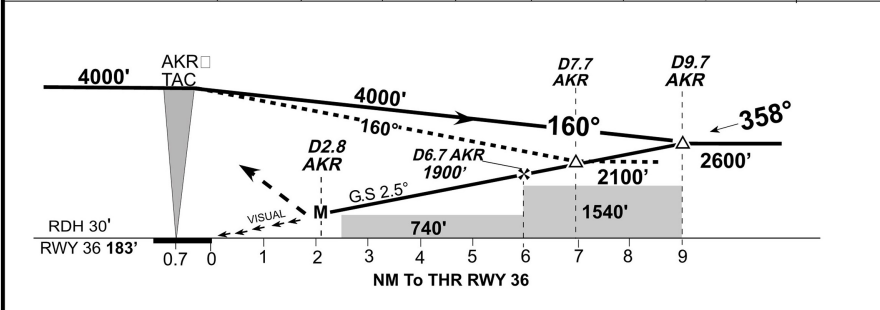


MISSED APCH: Climb straight ahead, turn **LEFT** not later than
AKR 4.0 DME to reach TAC at **4000'** or as directed.



TDZE RWY 36
N 31° 49.624'
E 34° 49.043'
Elev. 183'

AKR DME	2.0	3.0	4.0	5.0	6.0	7.0	8.0	9.7
ALT (H)	560' (377')	820' (637')	1090' (907')	1350' (1167')	1700' (1517')	1900' (1717')	2200' (2017')	2600' (2417')
NM to RWY 36	1.3	2.3	3.3	4.3	5.3	6.3	7.3	9.0



GND speed - KTS	90	120	150	180	210	240	D4.0 3000	4000' LT	HLD at 4000'
Rate of descent - FPM	400	535	665	800	930	1065			

Straight - in RWY 36 DA (H) 790'(607') VIS 3900m	MAX KTS	Circle to land MDA (H)
	165	1000'(804') VIS 3200m

LLEK
TEL - NOF

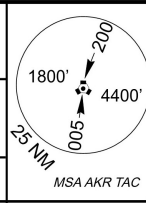
TRANSPORT

10 OCTOBER 18

בלנ"ס

TEL - NOF, ISRAEL
ILS DME Y RWY 36

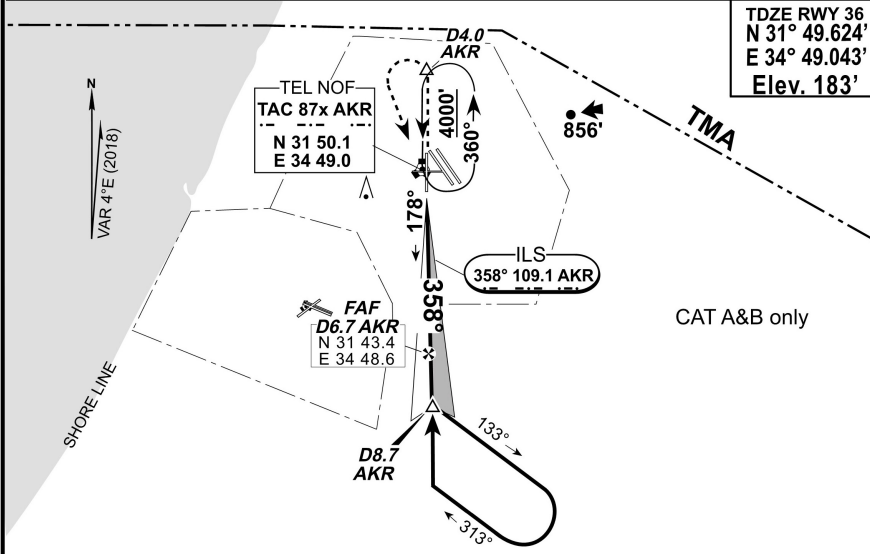
ATIS 1584	Area 506 304	Hold 506 268	Approach 168	Tower 128.15
---------------------	------------------------	------------------------	------------------------	------------------------



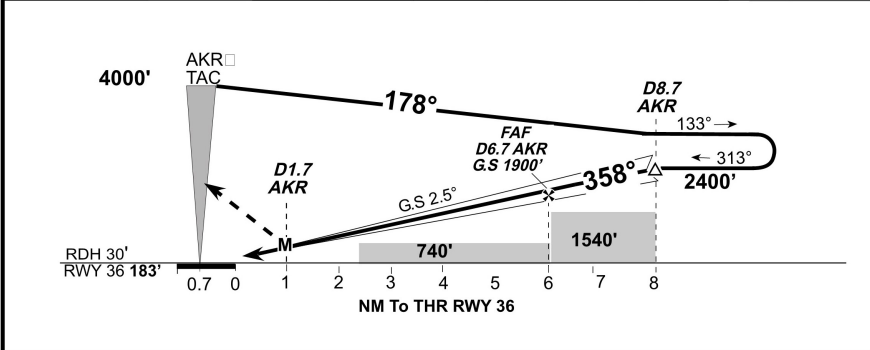
LOC AKR 109.1	Final APCH CRS 358°	FAF D6.7 AKR 1900'	ILS DA(H) 490'(307')	AD Elev 196'	TAC 87XAKR
----------------------------	----------------------------------	---------------------------------	-----------------------------------	------------------------	---------------

MISSED APCH: Climb straight ahead, turn **LEFT** ASAP and not later than AKR 4.0 DME to reach TAC at 4000' or as directed.

TDZE RWY 36
N 31° 49.624'
E 34° 49.043'
Elev. 183'



LOC	AKR DME	2.0	3.0	4.0	5.0	6.0	7.0	8.0	8.7
G.S OUT	ALT (H)	560' (377')	820' (637')	1090' (907')	1350' (1167')	1620' (1437')	1900' (1707')	2200' (1967')	2400' (2157')
NM to RWY 36		1.3	2.3	3.3	4.3	5.3	6.3	7.3	8.0



GND speed - KTS	90	120	150	180	D4.0	4000'	HLD at 4000'
ILS GS or LOC descent angle 2.5	400	535	665	800			

Straight - in RWY 36		MAX KTS 90 120 140	Circle to land
ILS 36 DA (H) 490'(307')	LOC 36 (G.S OUT) DA (H) 790'(607')		MDA (H)
			996'(800')

מסמך תעבורה - 517