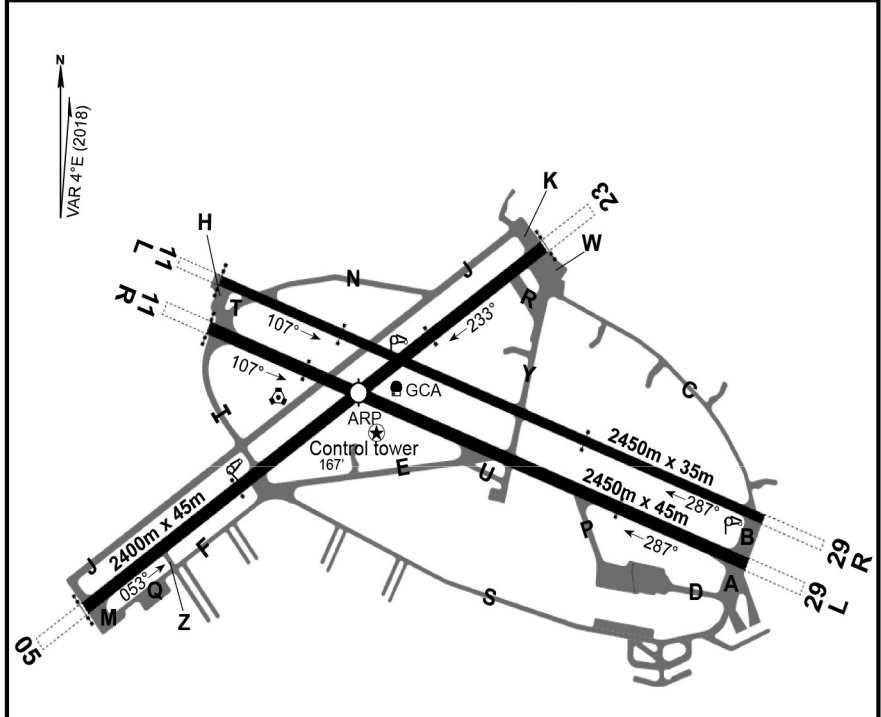
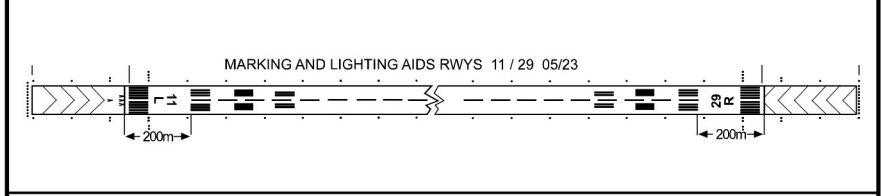


ATIS 118.20	Ground 135.25	Tower 123.55 6004	AD Elev 149'	AD REFERENCE POINT (ARP) N 31° 45'.7" E 34° 43'.642"
-----------------------	-------------------------	-----------------------------	------------------------	--

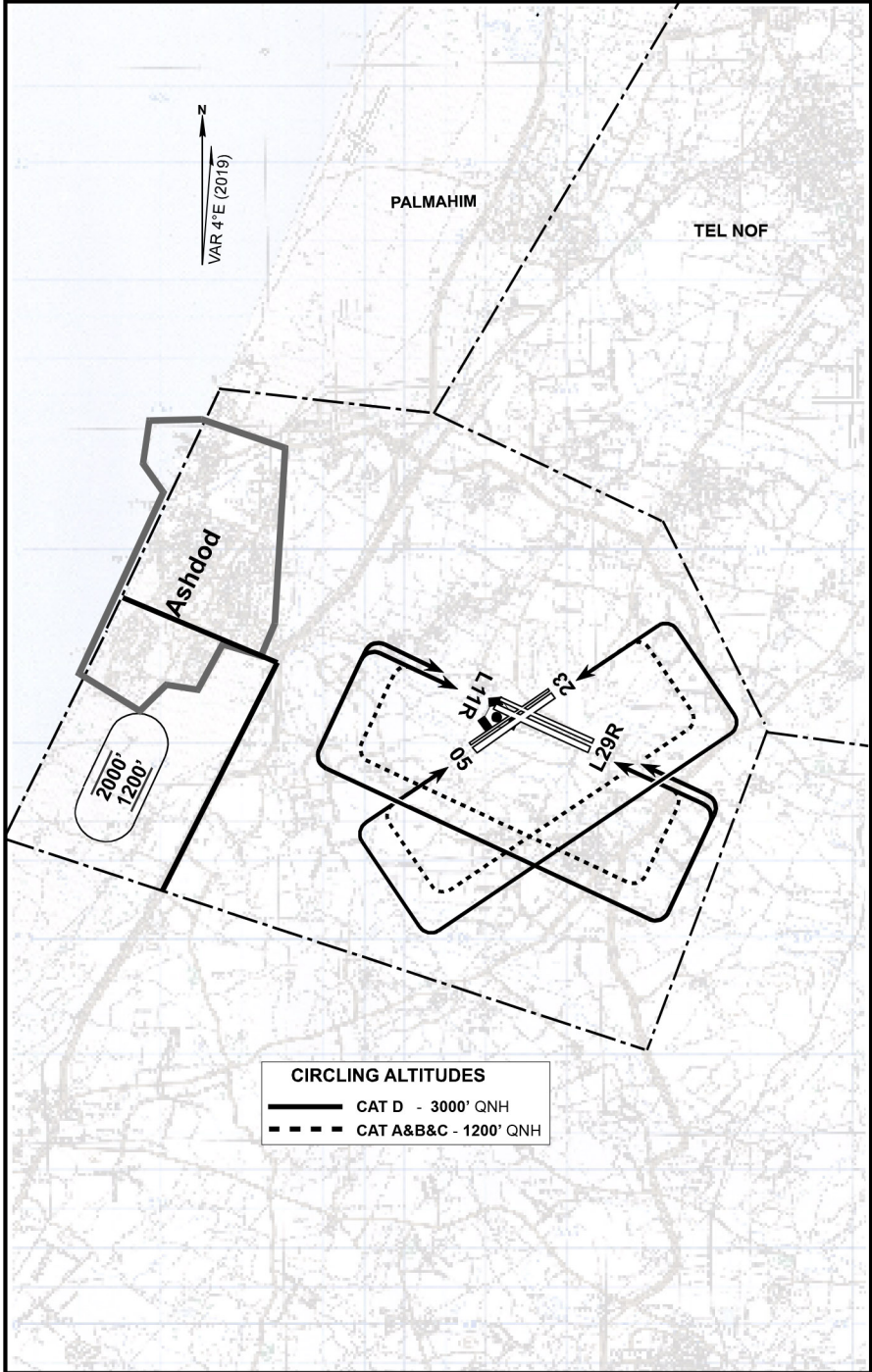


DECLARED DISTANCES (m)				
RWY	TORA	TODA	ASDA	LDA
05	2411	2661	2561	2411
23	2411	2656	2564	2411
11R	2475	2733	2642	2475
29L	2475	2686	2620	2475
11L	2505	2780	2665	2433
29R	2505	2693	2633	2505



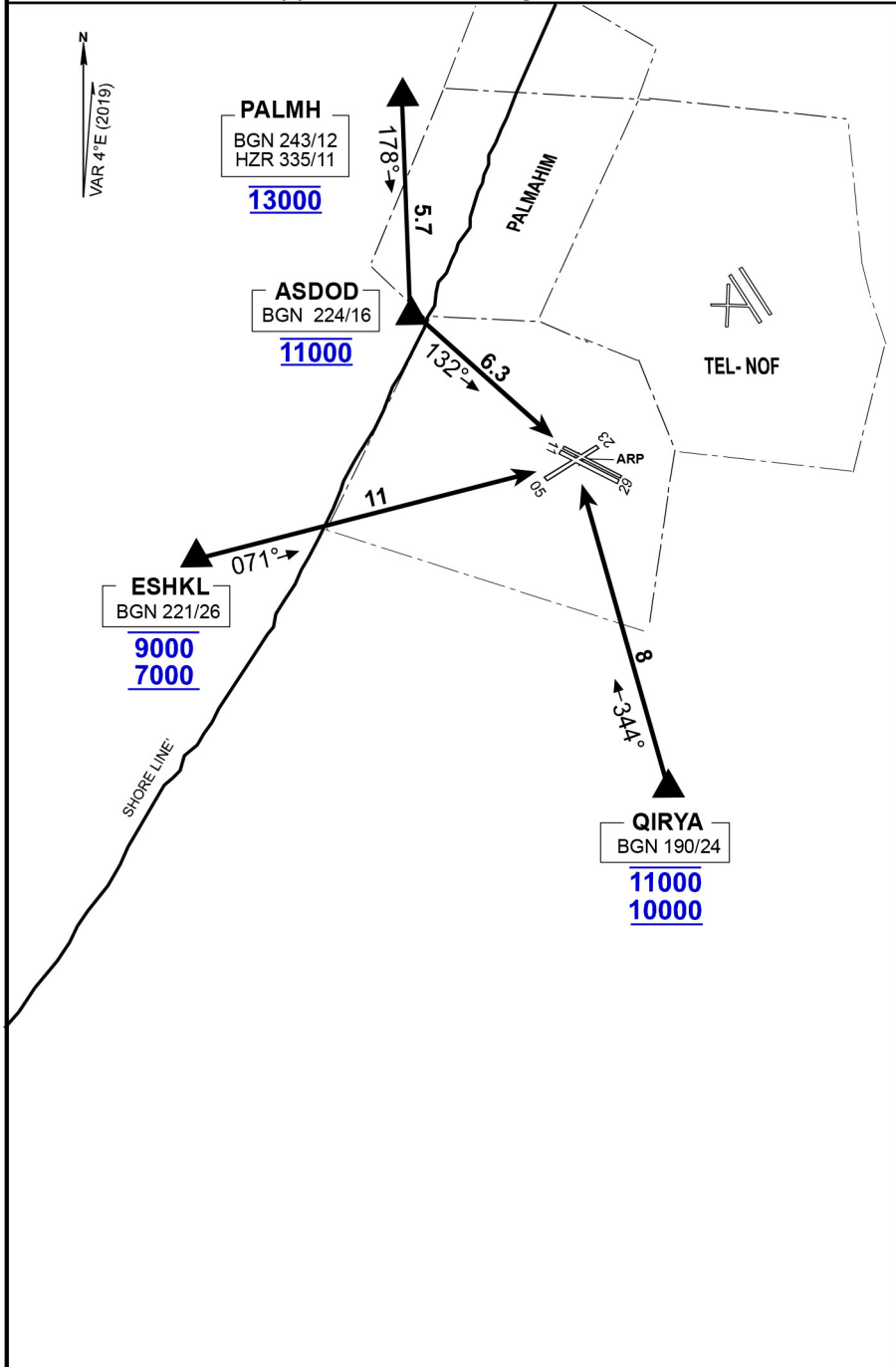
ADDITIONAL RWY INFORMATION						
RWY	DIRECTION	THR COORDINATES	ELEV	LENGTH	WIDTH	REMARKS
05	053°	N 31° 45.250' E 34° 42.902'	119'	2400m	45m	Instrument RWY
23	233°	N 31° 46.008' E 34° 44.145'	127'			NIL
11R	107°	'N 31° 45.837' E 34° 43.240'	113'	2450m	45m	NIL
29L	287°	N 31° 45.341' E 34° 44.699'	144'			NIL
11L	107°	N 31° 45.922' E 34° 43.311'	114'	2450m	35m	NIL
29R	287°	N 31° 45.437' E 34° 44.743'	144'			NIL
TWY J	053°	N 31° 45.304' E 34° 42.856'	115'	2400m	23m	Available in emergency landing
	233°	N 31° 46.044' E 34° 44.075'	133'			

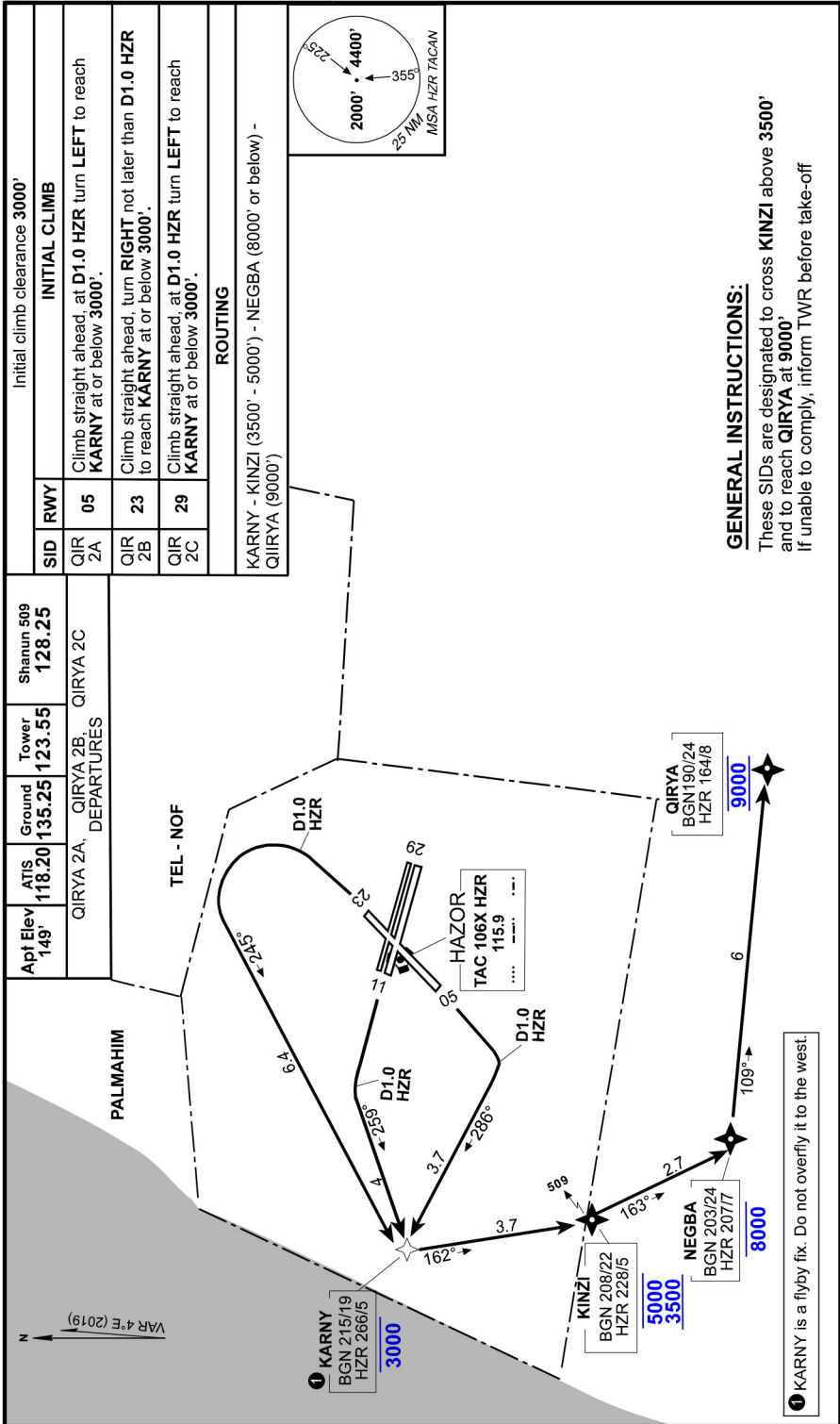
ATIS 118.20	Ground 135.25	Tower 123.55 (6004)	Approach 130.10	AD Elev 149'
----------------	------------------	---------------------------	--------------------	-----------------

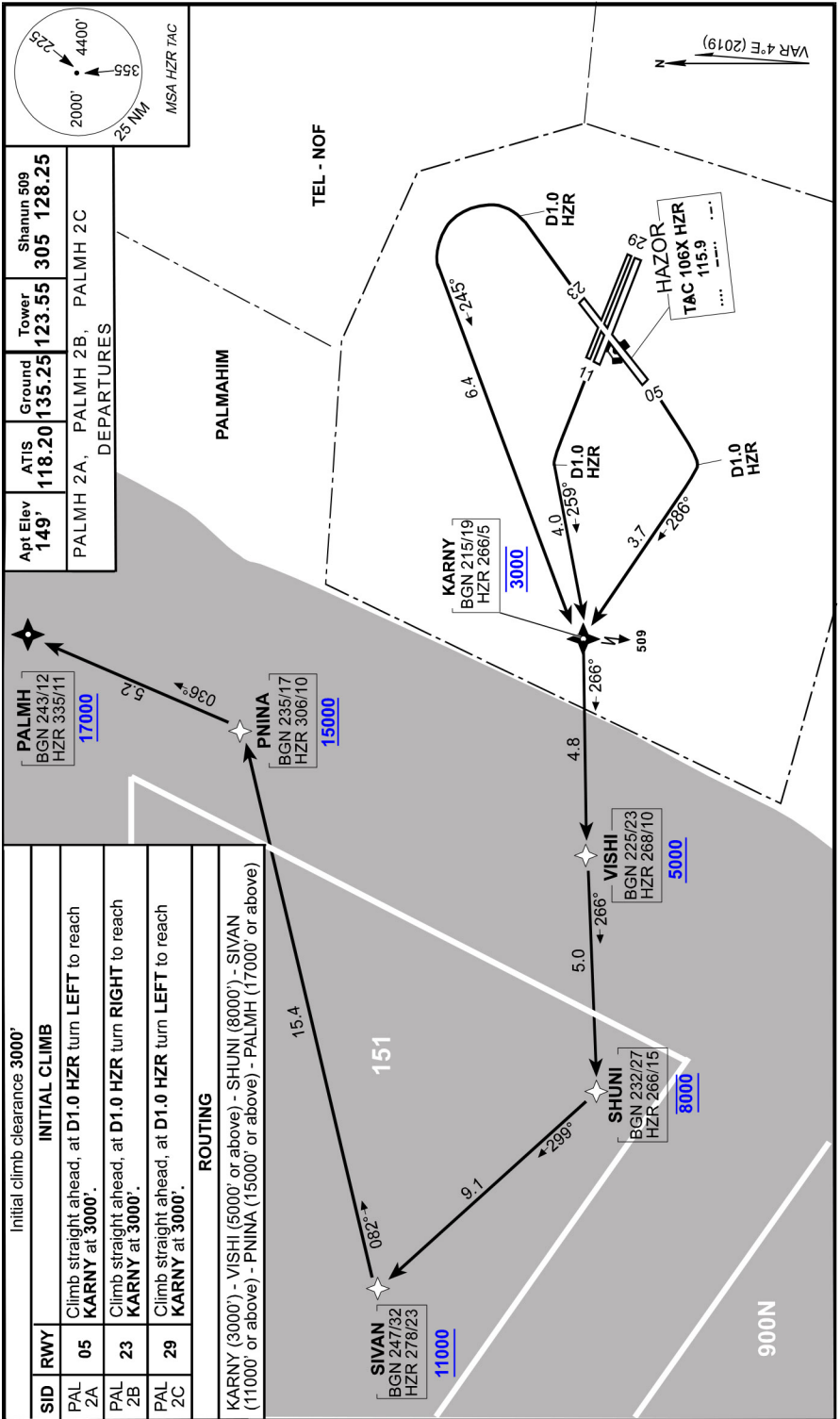


ATIS 118.20	Shanum 509 128.25	Approach 130.10	HAZOR Tower 123.55	Ground 135.25	AD Elev 149'
-----------------------	-----------------------------	---------------------------	------------------------------	-------------------------	------------------------

These procedures are designated for aircraft to be cleared to commence visual approach for landing.







LLHS
HAZOR

NOT TO SCALE

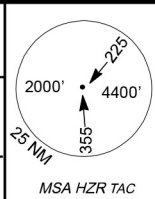
HAZOR, ISRAEL
ILS W Rwy 05

TRANSPORT

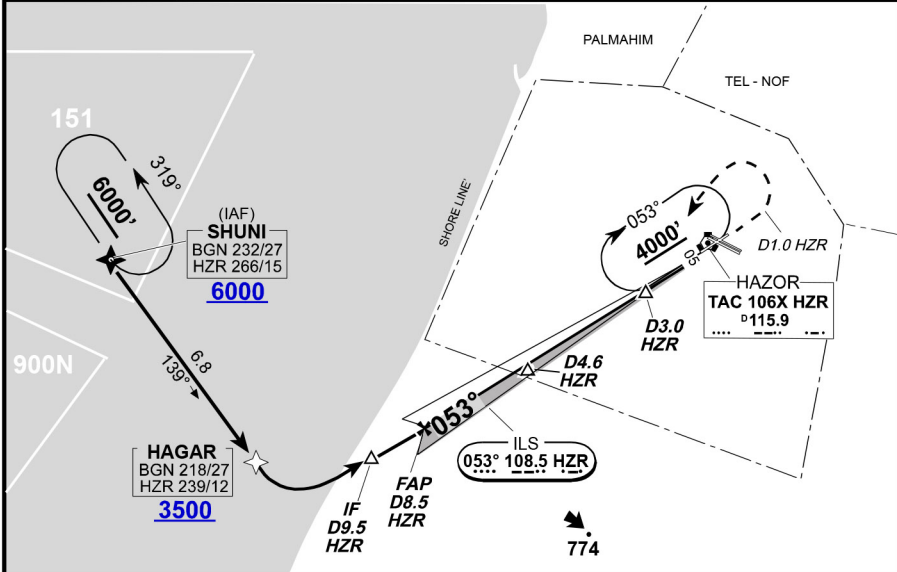
22 SEPTEMBER 2020

unclassified

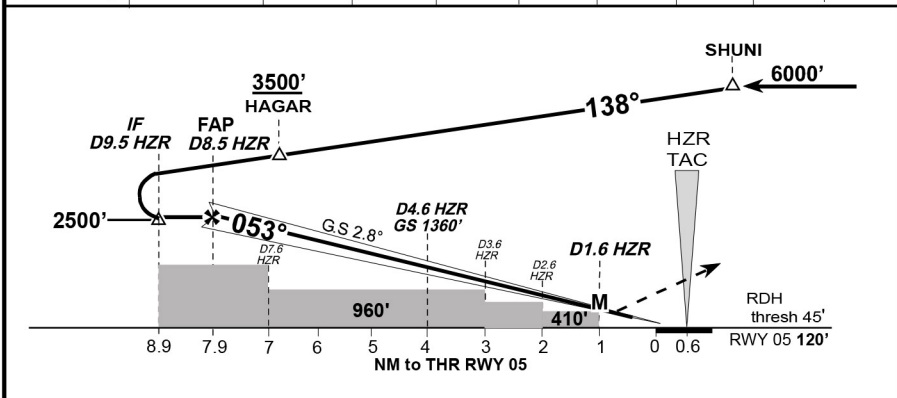
ATIS 118.20	Shanun 509 128.25	Hold 509 504	Approach 130.10	HAZOR Tower 123.55	Ground 135.25
LOC HZR 108.5	Final Apch Crs 053°	GS D4.6 HZR 1360'	ILS DA(H) 420' (300')	Apt Elev 149' TDZE 120'	



MISSED APCH: Initial climb 3000'. Climb **STRAIGHT AHEAD**, at D1.0 HZR turn **LEFT**, climbing as directed, and **HOLD**.



LOC	HZR DME	8.5	8.0	7.0	6.0	5.0	4.0	3.0	2.0
(GS OUT)	ALT	2500'	2370'	2070'	1770'	1470'	1180'	880'	580'



GND speed - KTS	90	120	150	180	210	240	
ILS GS or LOC Descent Angle	2.8°	450	595	745	895	1045	1190

3000'
D1.0

↑

LT

HOLD as directed

Straight - in RWY 05		Circle to land	
ILS 05 DA (H) 420' (300') VIS 2000m	LOC 05 (GS OUT) DA (H) 720' (600') VIS 3200m	MAX KTS 165	MDA (H) 950' (801') VIS 3200m

LLHS
HAZOR

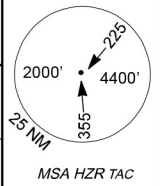
TRANSPORT

NOT TO SCALE
22 SEPTEMBER 2020

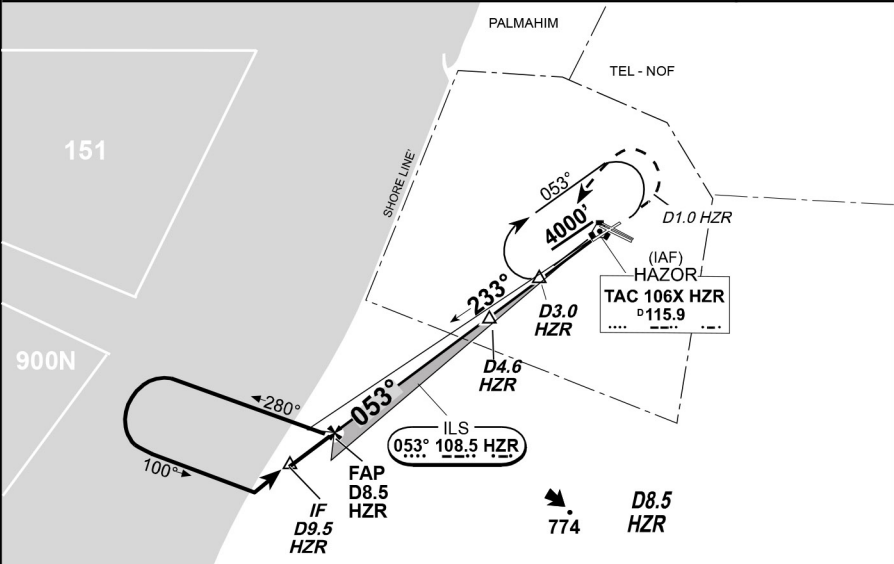
unclassified

HAZOR, ISRAEL
ILS X Rwy 05

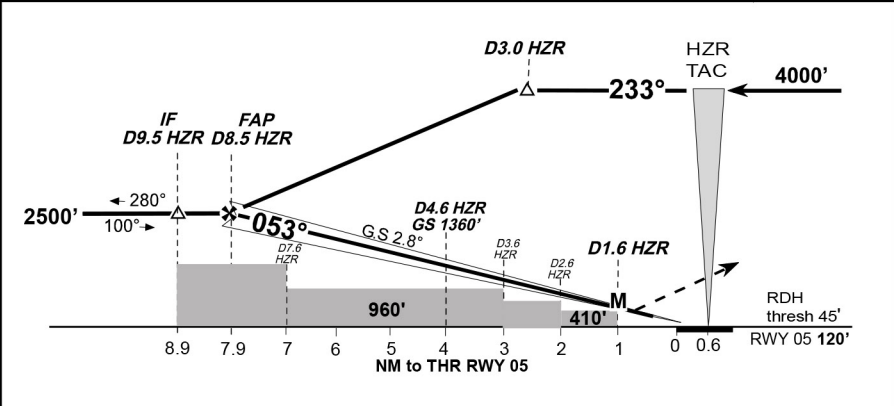
ATIS 118.20	Shanun 509 128.25	Hold 509 504	Approach 130.10	HAZOR Tower 123.55	Ground 135.25
LOC HZR 108.5	Final Apch Crs 053°	GS D4.6 HZR 1360'	ILS DA(H) 420' (300')	Apt Elev 149'	TDZE 120'



MISSED APCH: Initial climb 3000'. Climb **STRAIGHT AHEAD**, at D1.0 HZR turn **LEFT**, climbing as directed, and **HOLD**.



LOC	HZR DME	8.5	8.0	7.0	6.0	5.0	4.0	3.0	2.0
(GS OUT)	ALT	2500'	2370'	2070'	1770'	1470'	1180'	880'	580'



GND speed - KTS	90	120	150	180	210	240	
ILS GS or LOC Descent Angle	2.8°	450	595	745	895	1045	1190

3000'
D1.0'

↑

← **LT**

HOLD as directed

Straight - in RWY 05	
ILS 05 DA (H) 420' (300') VIS 2000m	LOC 05 (GS OUT) DA (H) 720' (600') VIS 3200m

Circle to land	
MAX KTS 165	MDA (H) 950' (801') VIS 3200m

LLHS
HAZOR

NOT TO SCALE

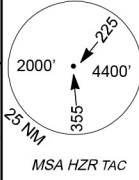
HAZOR, ISRAEL
ILS Y Rwy 05

TRANSPORT

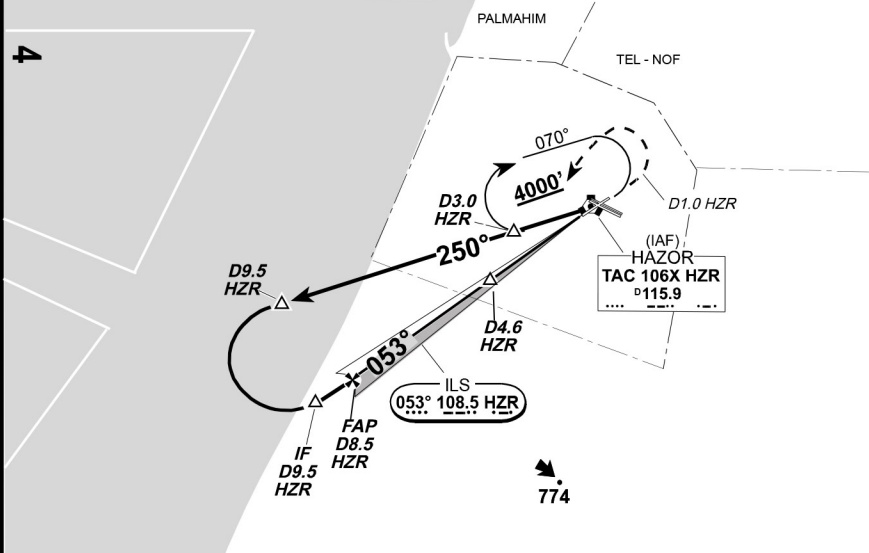
22 SEPTEMBER 2020

unclassified

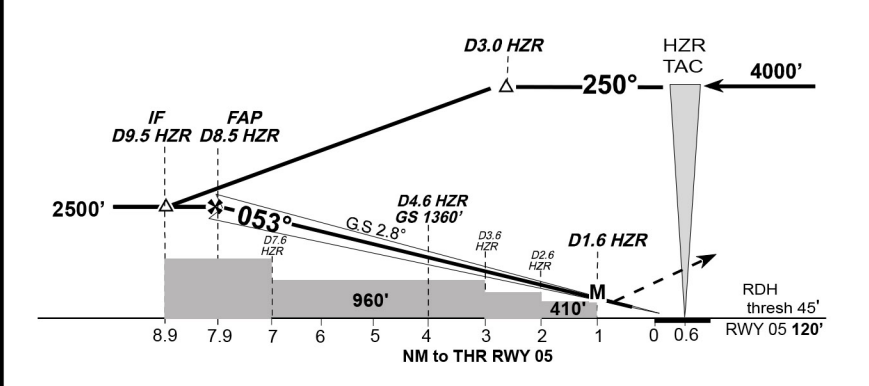
ATIS 118.20	Shanun 509 305 128.25	Hold 509 504	Approach 130.10	HAZOR Tower 123.55	Ground 135.25
LOC HZR 108.5	Final Apch Crs 053°	FAF D8.5 HZR 2500'	ILS DA(H) 420' (300')	Apt Elev 149'	TDZE 120'



MISSED APCH: Initial climb 3000'. Climb **STRAIGHT AHEAD**, at D1.0 HZR turn **LEFT**, climbing as directed, and **HOLD**.

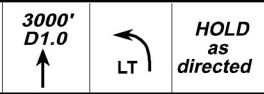


LOC	HZR DME	8.5	8.0	7.0	6.0	5.0	4.0	3.0	2.0
(GS OUT)	ALT	2500'	2370'	2070'	1770'	1470'	1180'	880'	580'



GND speed - KTS	90	120	150	180	210	240	
ILS GS or LOC Descent Angle	2.8°	450	595	745	895	1045	1190

MAP at D1.6 HZR



Straight - in RWY 05	
ILS 05 DA (H) 420' (300') VIS 2000m	LOC 05 (GS OUT) DA (H) 720' (600') VIS 3200m

Circle to land	
MAX KTS 165	MDA (H) 950' (801') VIS 3200m

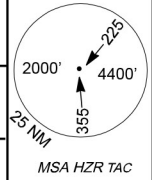
LLHS
HAZOR

TRANSPORT

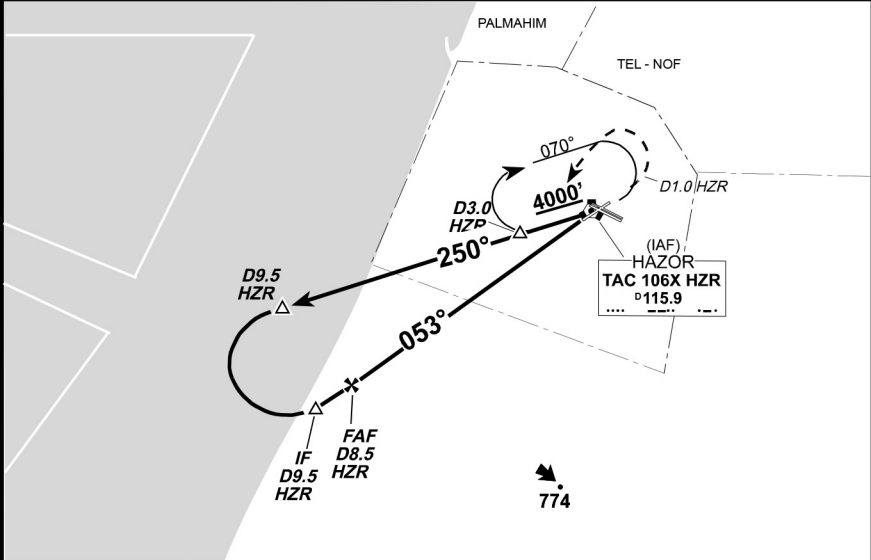
NOT TO SCALE
22 SEPTEMBER 2020

HAZOR, ISRAEL
TAC Y Rwy 05
unclassified

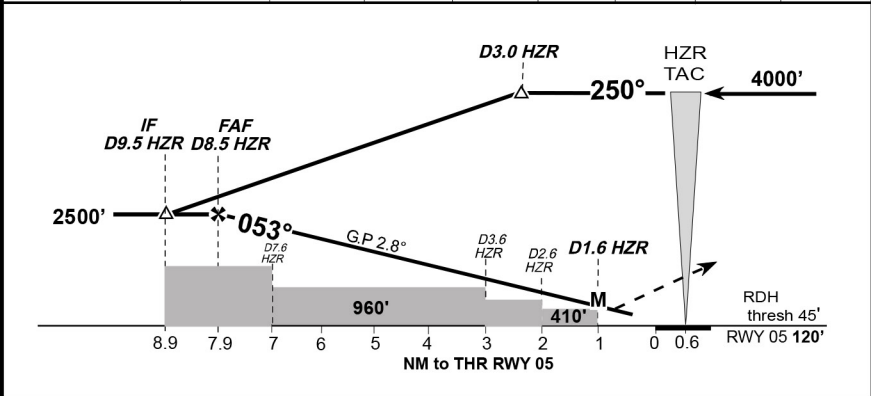
ATIS 118.20	Shanun 509 305 128.25	Hold 509 504	Approach 130.10	HAZOR Tower 123.55	Ground 135.25
TAC HZR 106X	Final Apch Crs 053°	FAF D8.5 HZR 2500'	TAC DA(H) 720' (600')	Apt Elev 149'	TDZE 120'



MISSED APCH: Initial climb 3000'. Climb **STRAIGHT AHEAD**, at D1.0 HZR turn **LEFT**, climbing as directed, and **HOLD**.



HZR DME	8.5	8.0	7.0	6.0	5.0	4.0	3.0	2.0
ALT	2500'	2370'	2070'	1770'	1470'	1180'	880'	580'



GND speed - KTS	90	120	150	180	210	240	
Descent Angle	2.8°	450	595	745	895	1045	1190

MAP at D1.6 HZR

3000'
D1.0

LT

HOLD as directed

Straight - in RWY 05

TAC 05
DA (H) **720' (600')**
VIS 3200m

Circle to land

MAX KTS	MDA (H)
165	950' (801')
	VIS 3200m

HAZOR WAYPOINTS

DEPARTURE		
ID	LAT/LON	SID
TAC 87X AKR 114.0	N 31 50.1 E 34 49.0	BGN 2
ALICE	N 31 47.8 E 34 35.7	PALMH 1
VOR BGN 113.5	N 32 00.8 E 34 52.5	BGN 2
^D KARNY	N 31 45.8 E 34 37.6	ALL SIDS
KINZI	N 31 42.5 E 34 38.5	QIRYA 1, QIRYA 2, BOFIR
NEGBA	N 31 39.9 E 34 39.1	QIRYA 1, QIRYA 2, BOFIR
PALMH	N 31 56.0 E 34 39.0	PALMH 1, PALMH 2, VISUAL ARRIVAL
PNINA	N 31 52.0 E 34 35.0	PALMH 2
QIRYA	N 31 37.6 E 34 45.2	QIRYA 1, QIRYA 2, VISUAL ARRIVAL
SHAYA	N 31 50.1 E 34 35.1	PALMH 1
SHUNI	N 31 46.0 E 34 26.0	SHUNI 1, SHUNI 2, PALMH 2, ILS W Rwy 05
SIVAN	N 31 51.0 E 34 17.0	PALMH 2
VISHI	N 31 45.9 E 34 31.9	PALMH 2

ARRIVAL	
ID	LAT/LON
TAC 106X HZR ^D 115.9	N 31 45.79 E 34 43.42
Hold D3.0 HZR (RAD 233)	N 31 44.0 E 34 40.5
Hold D3.0 HZR (RAD 250)	N 31 45.0 E 34 40.0
SHUNI	N 31 46.0 E 34 26.0
HAGAR	N 31 40.5 E 34 30.8
IF D9.5 HZR	N 31 40.45 E 34 34.10
FAP D8.5 HZR	N 31 41.00 E 34 35.10
GS D4.6 HZR	N 31 43.10 E 34 38.95
Threshold Rwy 05	N 31 45.250 E 34 42.902
TDZ Rwy 05	N 31 45.313 E 34 43.005
AD Reference Point (ARP)	N 31 45.700 E 34 43.642
ASDOD	N 31 50.3 E 34 38.6
ESHKL	N 31 43.0 E 34 31.0
PALMH	N 31 56.0 E 34 39.0
QIRYA	N 31 37.6 E 34 45.2